



Chen Hsong Europe



FOCUS-SVP/2 SERIES

20 - 60 TON - *Injection moulding machine*



FOCUS 20 – 60 TON

Injection moulding machine

EUROMAP STANDARD

Hole pattern and ejector pattern according to Euromap standards*.
T-slot or other pattern possible on request.



EUROPEAN COMPONENTS

Standard European components:

Hydraulic valves:	Bosch Rexroth or Vickers or Yuken
Hydraulic pump:	Eckerle or HYTEK
Linear transducers:	Gefran or Novotechnik
Electrical components:	Siemens, Schneider, Telemecanique, PILZ, LS

*Hole pattern/ejector pattern may differ from standard due to platen design.

B&R9 CONTROLLER

The B&R9 controller offers an integrated solution for the automation of the Chen Hsong injection moulding machines. High-speed applications and complete production cells can be implemented with B&R9. The integrated Extremely Fast Control technology enables the sampling of rapidly changing input signals, allowing the injection process to be controlled with high precision. The 10.4" screen area enables a clear process visualization.



INOVANCE SERVO DRIVE SYSTEM

The Inovance servo drive system is designed dedicated for injection moulding machines. This system provides high performance, precision, low noise and easy maintenance. For machines using this servo drive, energy saving up to 80% can be achieved.



ENERGY SAVING

The SVP/2 system, with speed controlled servomotor, drives a fixed internal gear pump. The system pressure is measured real-time by a pressure sensor. In this way it can provide the required flow according the requirement to eliminate non-functioning consumption. In total this leads to lower energy consumption, high precision, low noise and low inertia.

STANDARD AND OPTIONAL FEATURES

CLAMPING UNIT	STANDARD	OPTION
Automatic mould height adjust	•	
Hydraulic safety device	•	
Core puller	2	
Additional corepullers(up to 6 core pullers)		•
Airblow on fixed and moving platen	1 + 1	
Parallel core movement		•
Parallel ejector movement		•
Euromap 2 platen design*	•	
Euromap 13 for core and ejector	•	
Euromap 18 for robot mounting	•	
Euromap 67 for robot communication	•	
Euromap 70 and 70.1		•
Larger maximum mould height		•
Automatic lubrication on toggle	•	
Automatic lubrication on mold height adjust		•

OTHERS

Up to 16 zones integrated hotrunner System (Euromap 14 standard)		•
Power sockets 3-phase 400V 16A	2	
Power sockets 2-phase 240V 16A	2	
Waterflow regulators(more available upon request)	4 circuits	

*Hole pattern/ejector pattern may differ from standard due to platen design

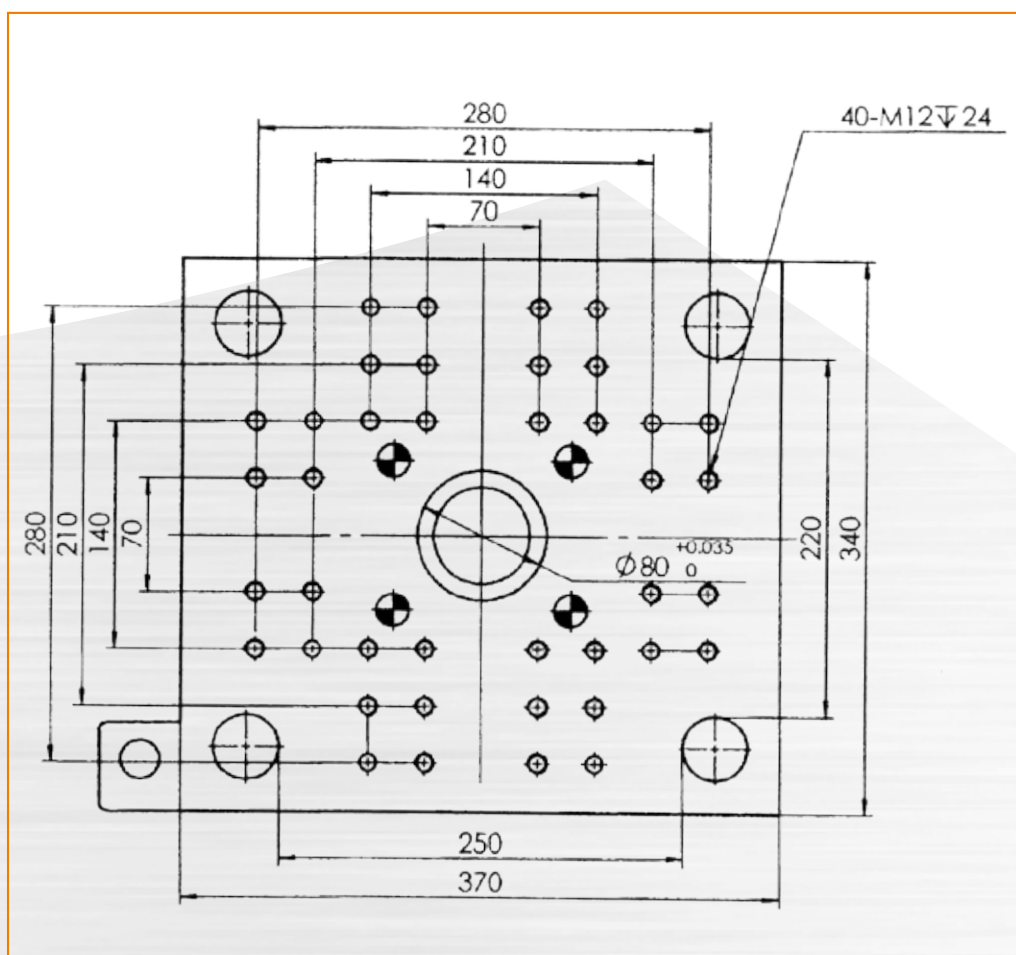
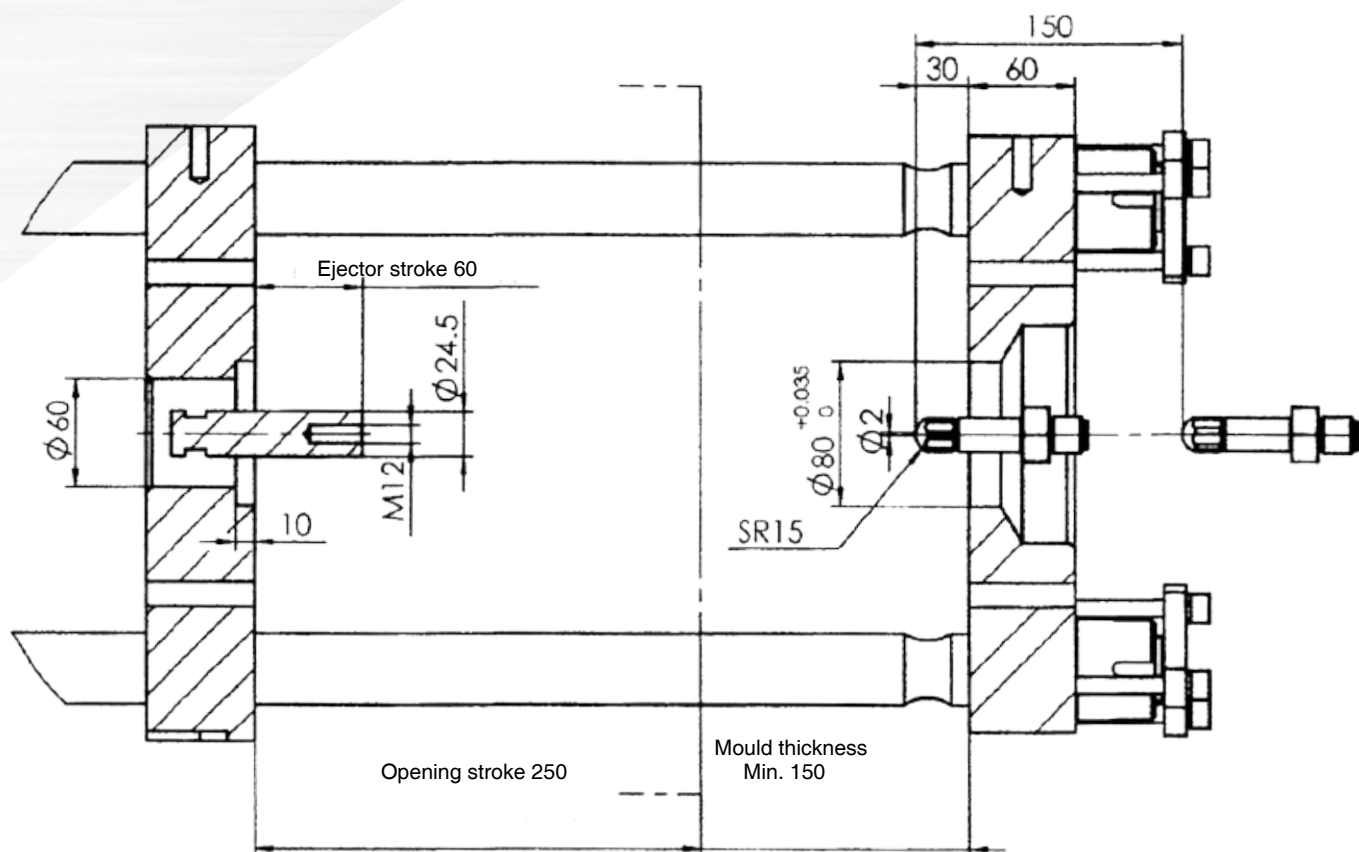
INJECTION UNIT	STANDARD	OPTION
Ceramic heater bands	•	
Nitrated screw and barrel	•	
Bi-metallic screw and barrel		•
PET or PVC screw features		•
Adjustable backpressure	•	
Barrel shut-off nozzle		•
Hydraulic/pneumatic sequential injection (up to 12 valves)		•
Linear transducer on injection stroke	•	
Linear transducer on injection unit stroke	•	
Screw speed indicator	•	
Controlled barrel cooling	•	
Barrel insulation		•
Central lubrication points	•	
Anti-skid plates on horizontal surfaces	•	
Parallel plasticizing		•
CONTROLLER		
B&R9 CONTROLLER	•	
10.4" SVGA display	•	
Free programmable cores	•	
Free I/O Configuration	•	
Sequence editor	•	
High-precision mould safety	•	
PowerLink-based Extremely Fast Control technology	•	
Ethernet interface for teleservice via internet	•	
USB interface	•	
Euromap 67 interface	•	
Industry 4.0		•
OPC-UA		•

FOCUS 20-H-SVP/2

Injection moulding machine

Injection unit	Unit	FOCUS 20-H-SVP/2		
Swept volume	cm ³	20	25	30
Injection weight (PS)	g	18	22	27
Screw diameter	mm	18	20	22
Screw L/D ratio	L/D	21	19	17.5
Injection Pressure (Max)	kgf/cm ²	2,139	1,732	1,426
Plasticizing capacity (PS)	g/s	2	3	4.2
Screw rotation speed (Max)	rpm	290		
Screw stroke	mm	80		
Clamping unit				
Clamping force (Max)	t	20		
Opening stroke	mm	250		
Maximum daylight	mm	400		
Mould platen (HxV)	mm	370 x 340		
Space between tiebars (HxV)	mm	250 x 220		
Max. mould thickness	mm	400		
Min. mould thickness	mm	150		
Ejector stroke	mm	60		
Ejector force	t	1.7		
Others				
System pressure	MPa	17.5		
Pump motor	kW	11		
Electrical heating	kW	3		
Temperature Control Zones	Zones	3		
Oil Tank Capacity	L	80		
Machine dimensions (LxWxH)	m	2.8 x 1.0 x 1.6		
Machine weight	t	1.2		

All technical data and features are subjected to change without notice.



FOCUS 35-SVP/2

Injection moulding machine

Injection unit	Unit	FOCUS 35-SVP/2		
Swept volume	cm ³	43	56	70
Injection weight (PS)	g	39	51	64
Screw diameter	mm	22	25	28
Screw L/D ratio	L/D	23	20	18
Injection Pressure (Max)	kgf/cm ²	2,233	1,732	1,377
Plasticizing capacity (PS)	g/s	3.2	4.6	6.5
Screw rotation speed (Max)	rpm	230		
Screw stroke	mm	115		
Clamping unit				
Clamping force (Max)	t	35		
Opening stroke	mm	230		
Maximum daylight	mm	530		
Mould platen (HxV)	mm	450 x 430		
Space between tiebars (HxV)	mm	280 x 260		
Max. mould thickness	mm	300		
Min. mould thickness	mm	80		
Ejector stroke	mm	60		
Ejector force	t	2.7		
Others				
System pressure	MPa	17		
Pump motor	kW	11		
Electrical heating	kW	4.2		
Temperature Control Zones	Zones	3 + Nozzle		
Oil Tank Capacity	L	90		
Machine dimensions (LxWxH)	m	3.3 x 1.1 x 1.8		
Machine weight	t	1.6		

All technical data and features are subjected to change without notice.

FOCUS 60-SVP/2

Injection moulding machine

Injection unit	Unit	FOCUS 60-SVP/2		
Swept volume	cm ³	63	80	98
Injection weight (PS)	g	58	72	89
Screw diameter	mm	25	28	31
Screw L/D ratio	L/D	22	20	18
Injection Pressure (Max)	kgf/cm ²	2,070	1,652	1,346
Plasticizing capacity (PS)	g/s	6	8.4	11.3
Screw rotation speed (Max)	rpm	240		
Screw stroke	mm	130		
Clamping unit				
Clamping force (Max)	t	60		
Opening stroke	mm	270		
Maximum daylight	mm	600		
Mould platen (HxV)	mm	450 x 450		
Space between tiebars (HxV)	mm	310 x 310		
Max. mould thickness	mm	330		
Min. mould thickness	mm	100		
Ejector stroke	mm	75		
Ejector force	t	2.8		
Others				
System pressure	MPa	14.8		
Pump motor	kW	11		
Electrical heating	kW	5.2		
Temperature Control Zones	Zones	3 + Nozzle		
Oil Tank Capacity	L	130		
Machine dimensions (LxWxH)	m	3.4 x 1.1 x 1.8		
Machine weight	t	2		

All technical data and features are subjected to change without notice.



Chen Hsong Europe

Address: Hooghe Weg 4, 47906
Kempen, Germany
Phone: +49(0)15204695827
Email: europe@chenhsong.com
Website: chenhsong.com

202206